

Barrier MHTM™ MicroDrive

ACCESS PRO H

ACCESS

TOLL

ACCESS PRO

TOLL PRO

ACCESS SELECT

TOLL HIGH SPEED

PARKING

PARKING PRO

PARKING SELECT

Contents

1	Safety	3
2	Scope of delivery	3
	2.1 ACCESS PRO H	3
	2.2 ACCESS / PARKING	4
	2.3 TOLL	4
3	Required tools	5
4	Dimensions	6
	4.1 ACCESS PRO H	6
	4.2 ACCESS / PARKING	7
	4.3 TOLL	8
5	Set up foundation and install housing	9
6	Remove transport protection	10
7	Electrical connection	10
8	Assemble barrier boom	11
	8.1 ACCESS PRO H	11
	8.2 ACCESS / PARKING	13
	8.3 TOLL	16
9	Align barrier boom	17
10	Adjust balancing springs	18
11	Stick on warning signs	18
12	Start up barrier	19

1 Safety



WARNING!

These instructions are short instructions. These instructions do not replace the operating instructions „MHTM™ MicroDrive“ that are part of the delivery.

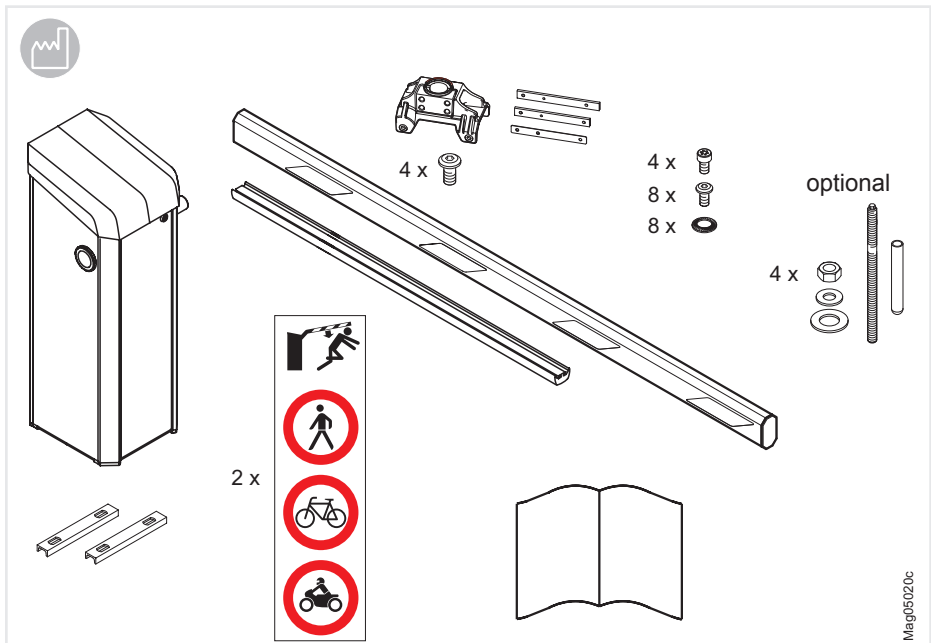
These short instructions are targeted at specialists who already have experience with assembly, installation and commissioning.

For detailed information, see the operating instructions. Read the operating instructions carefully before commencing any work. The prerequisite for secure work is compliance with any safety notes and instructions for actions included in the operating instructions.

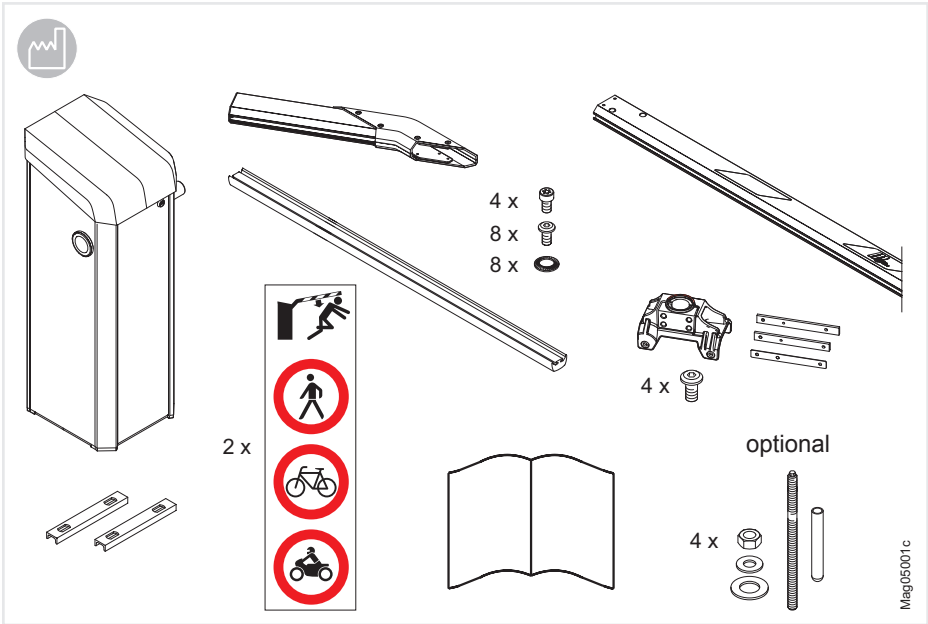
The manufacturer is not liable for any damage from improper or non-intended use.

2 Scope of delivery

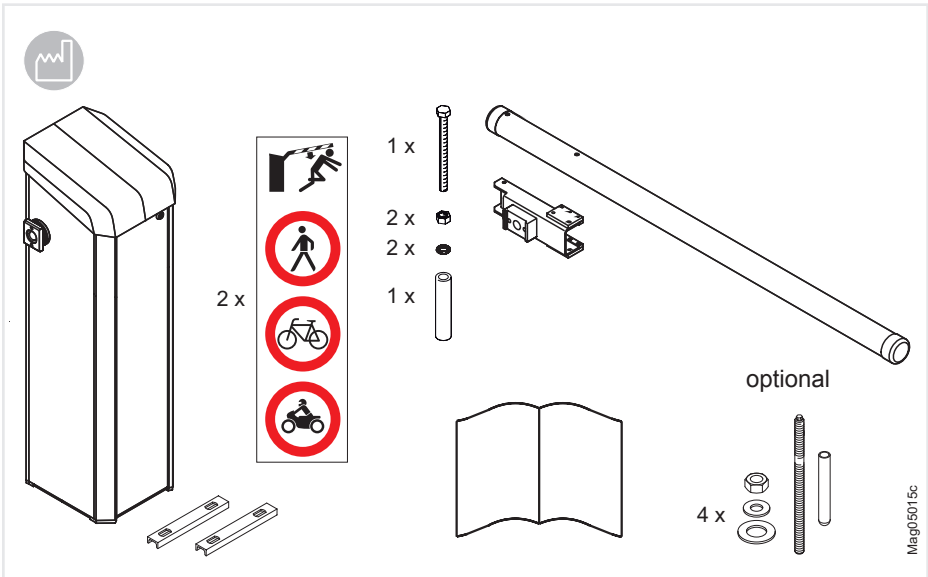
2.1 ACCESS PRO H



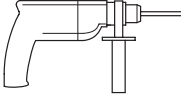
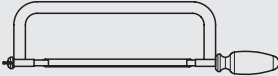
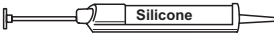




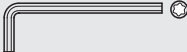

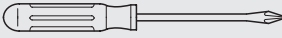
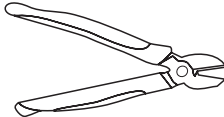
2.2 ACCESS / PARKING



2.3 TOLL

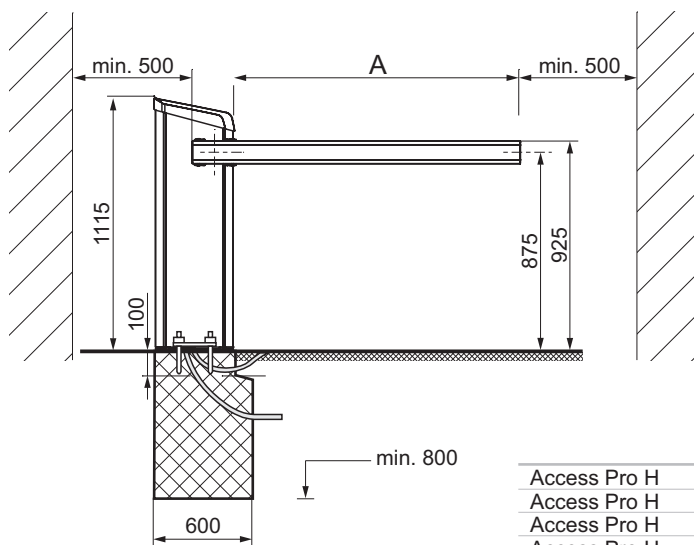


3 Required tools

		ACCESS PRO H	ACCESS/ PARKING	TOLL
	Impact drill 10 mm	x	x	x
	Saw	x	x	
	Silicone cartridge	x	x	x
	Open-face wrench 13 mm	x	x	x
	Torque wrench, hexagon socket 5 AF	x	x	
	Torque wrench, hexagon socket 8 AF			x
	Torque wrench, hexagon socket 10 AF	x	x	x
	Torx wrench T20		x	
	Hexagon socket wrench 4 AF		x	x
	Phillips screwdriver for 3.5 mm	x	x	
	Diagonal pliers	x	x	x

4 Dimensions

4.1 ACCESS PRO H



	A
Access Pro H	3500
Access Pro H	4500
Access Pro H	5000
Access Pro H	6000

Left version



MicroBoom

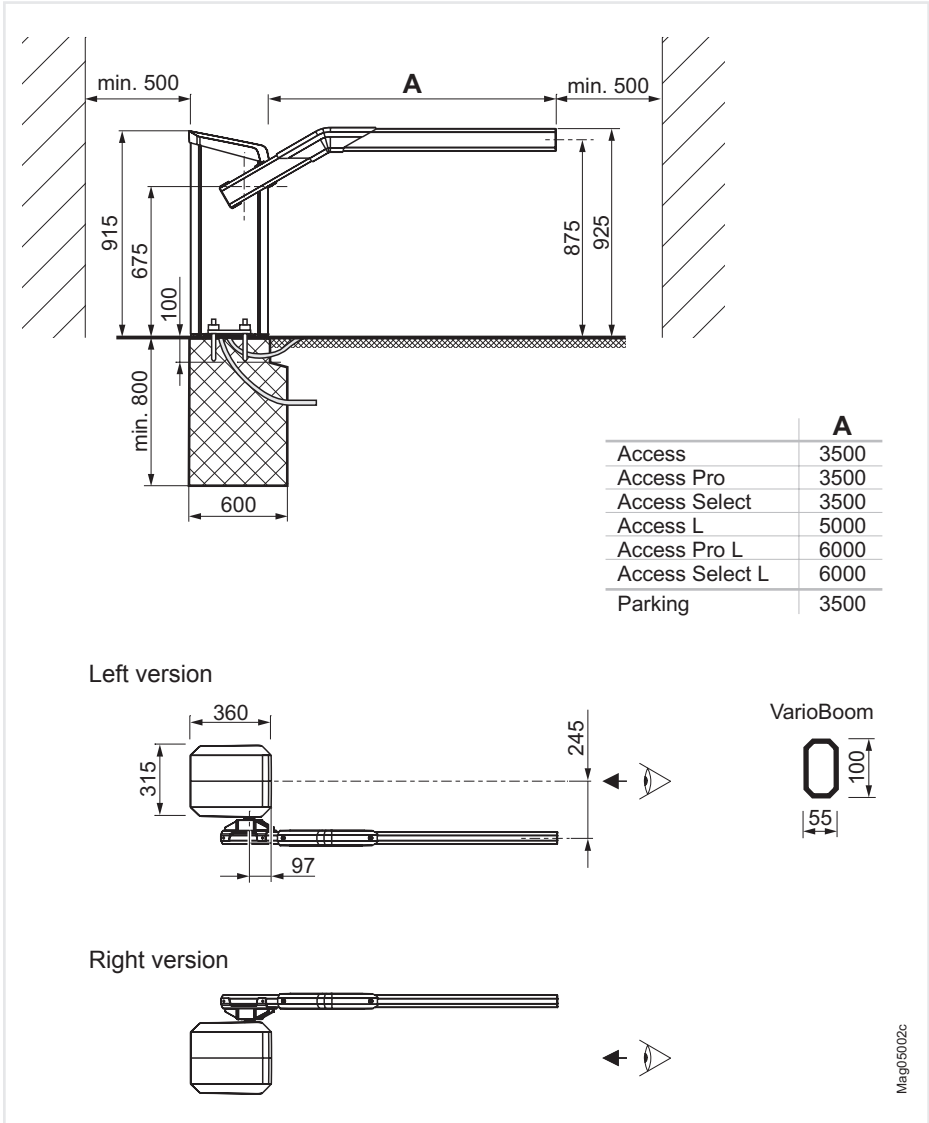


Right version



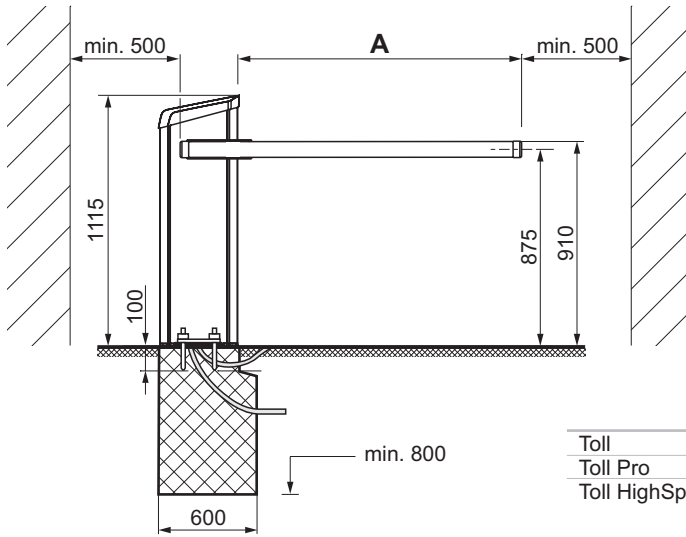
Mag05021a

4.2 ACCESS / PARKING



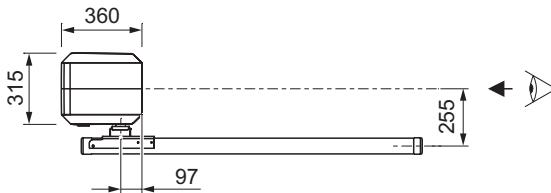
Mag05002c

4.3 TOLL



	A
Toll	3000
Toll Pro	3000
Toll HighSpeed	2000 / 2500 / 3000
Toll HighSpeed 2	1500

Left version



Right version

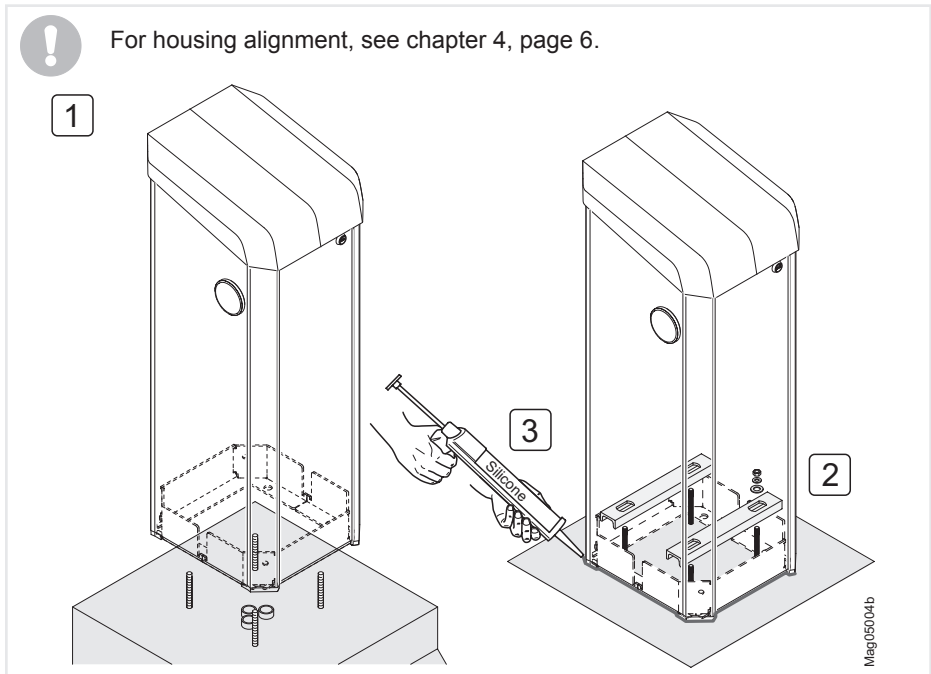
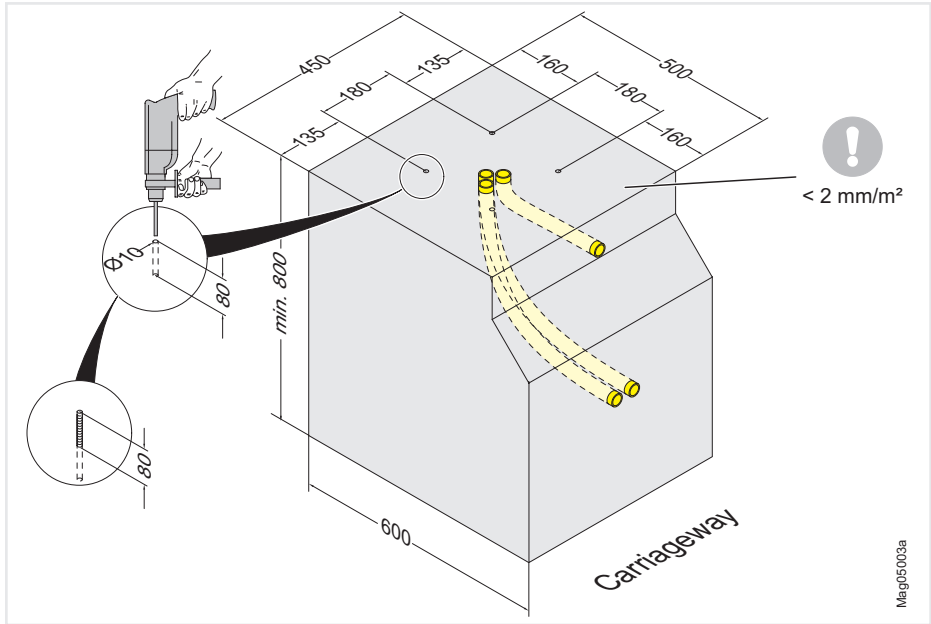


MicroBoom-T

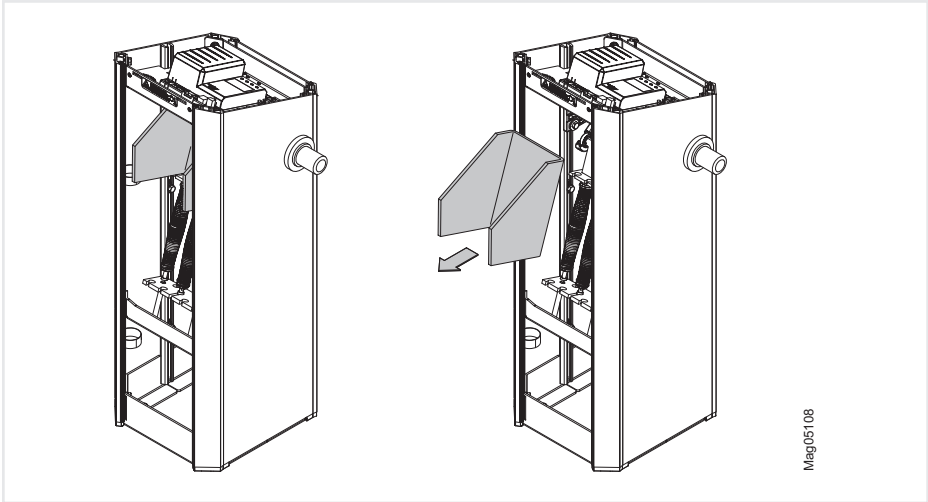


Mag05016c

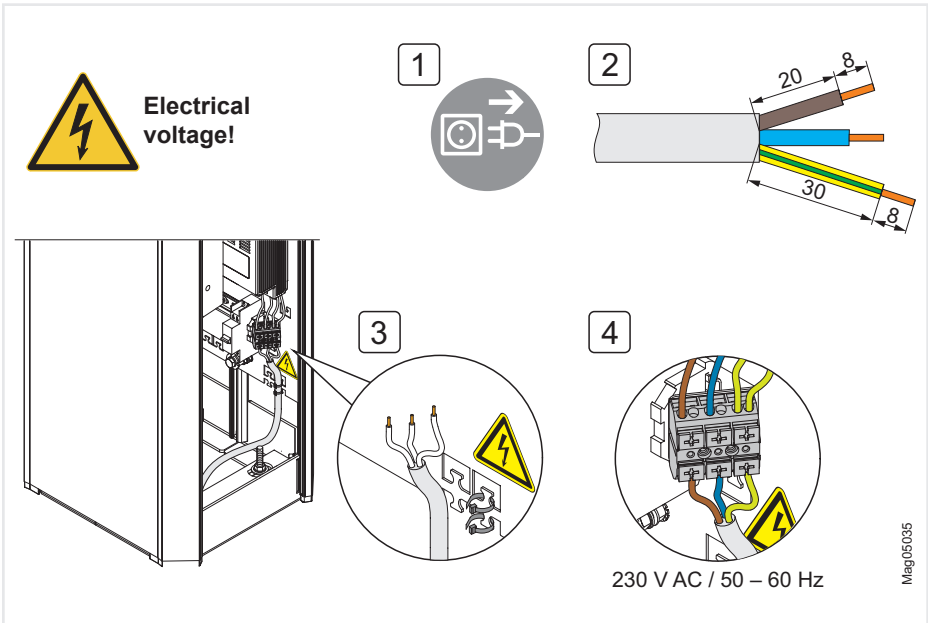
5 Set up foundation and install housing



6 Remove transport protection

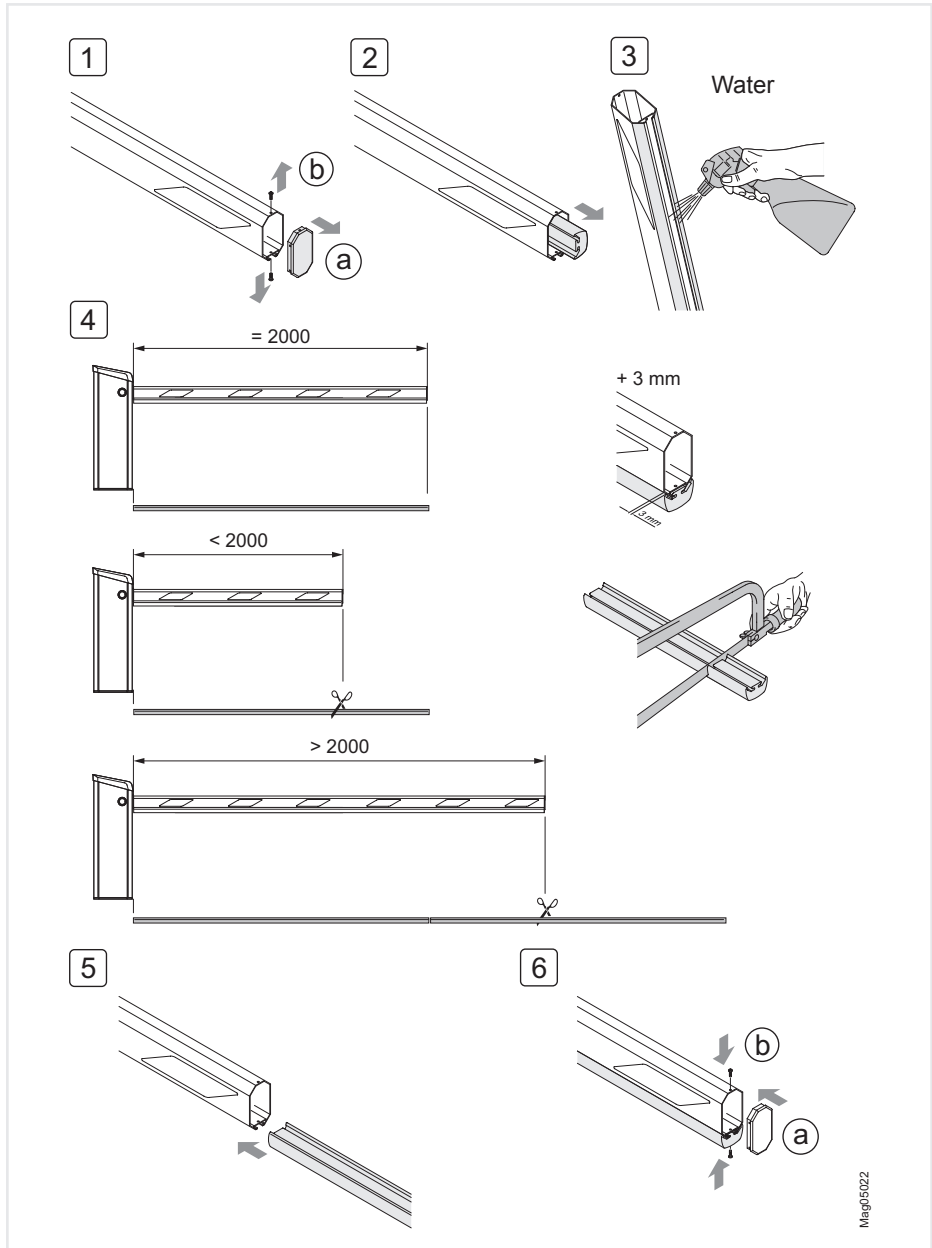


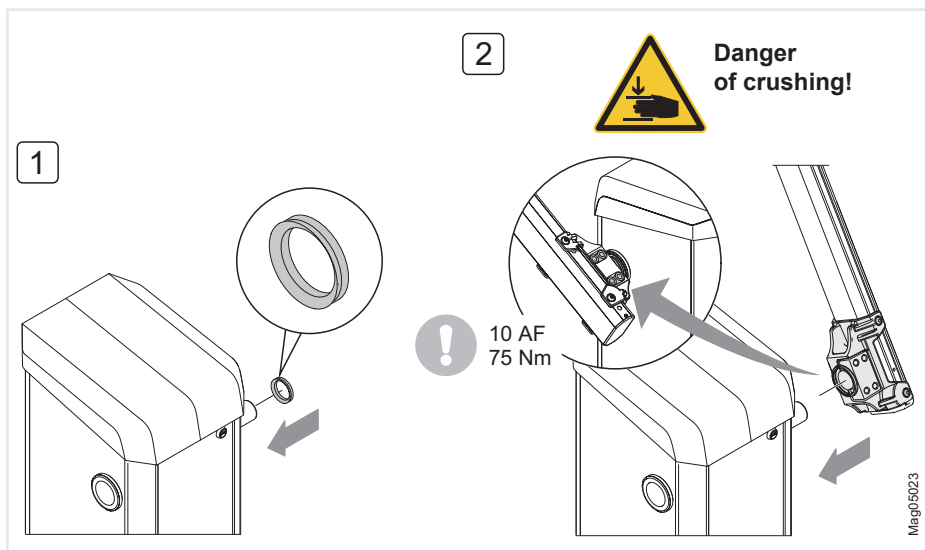
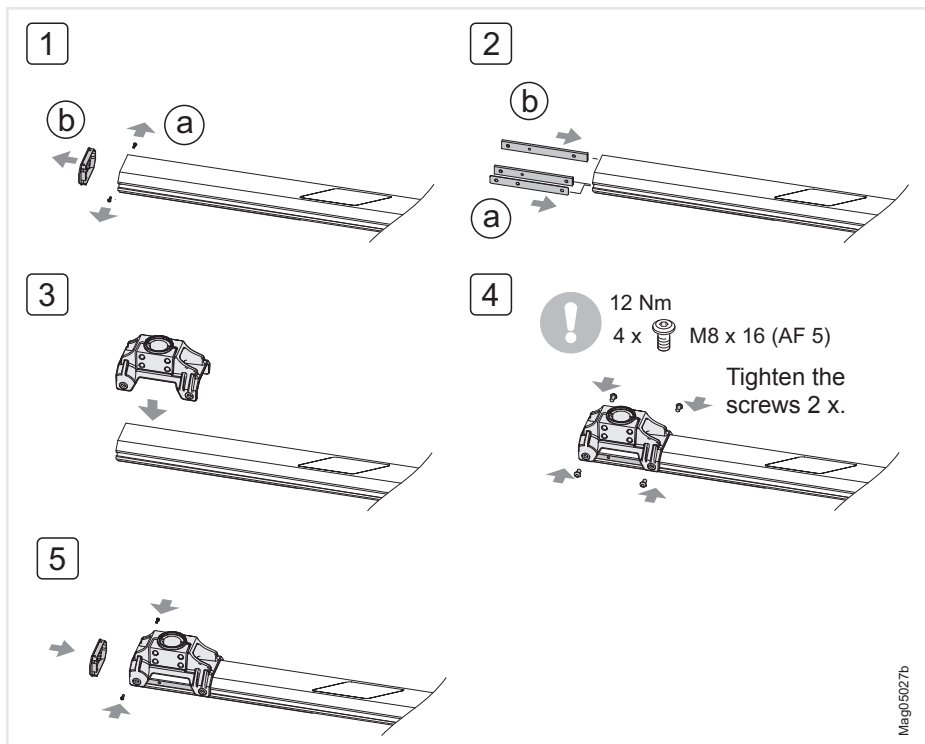
7 Electrical connection



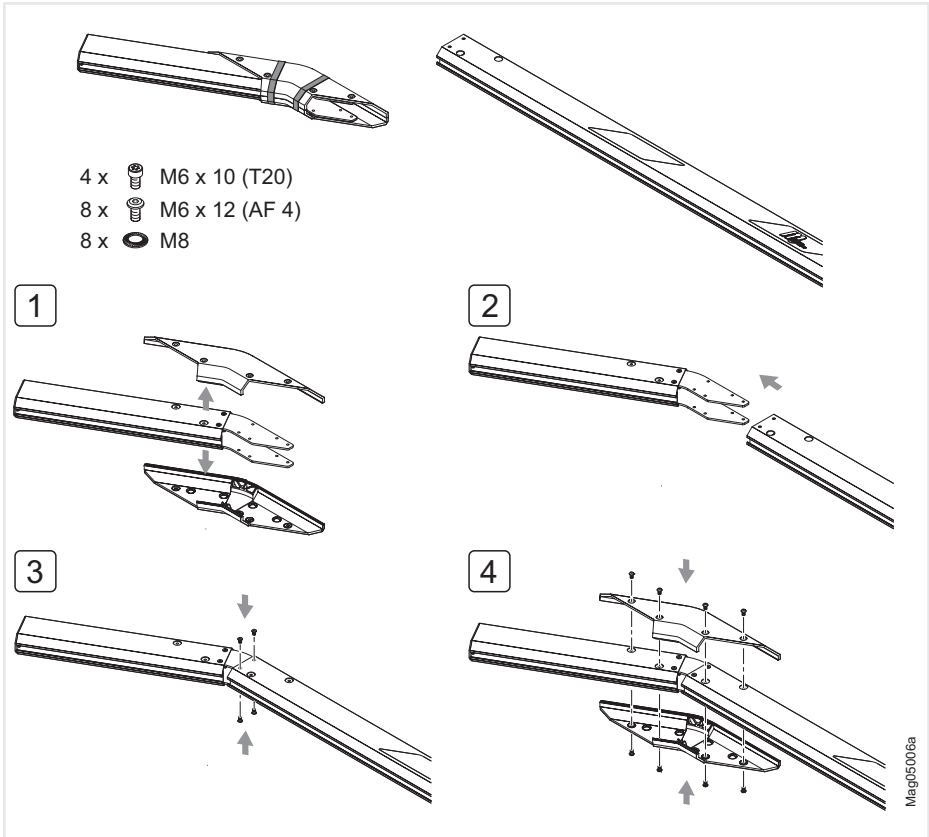
8 Assemble barrier boom

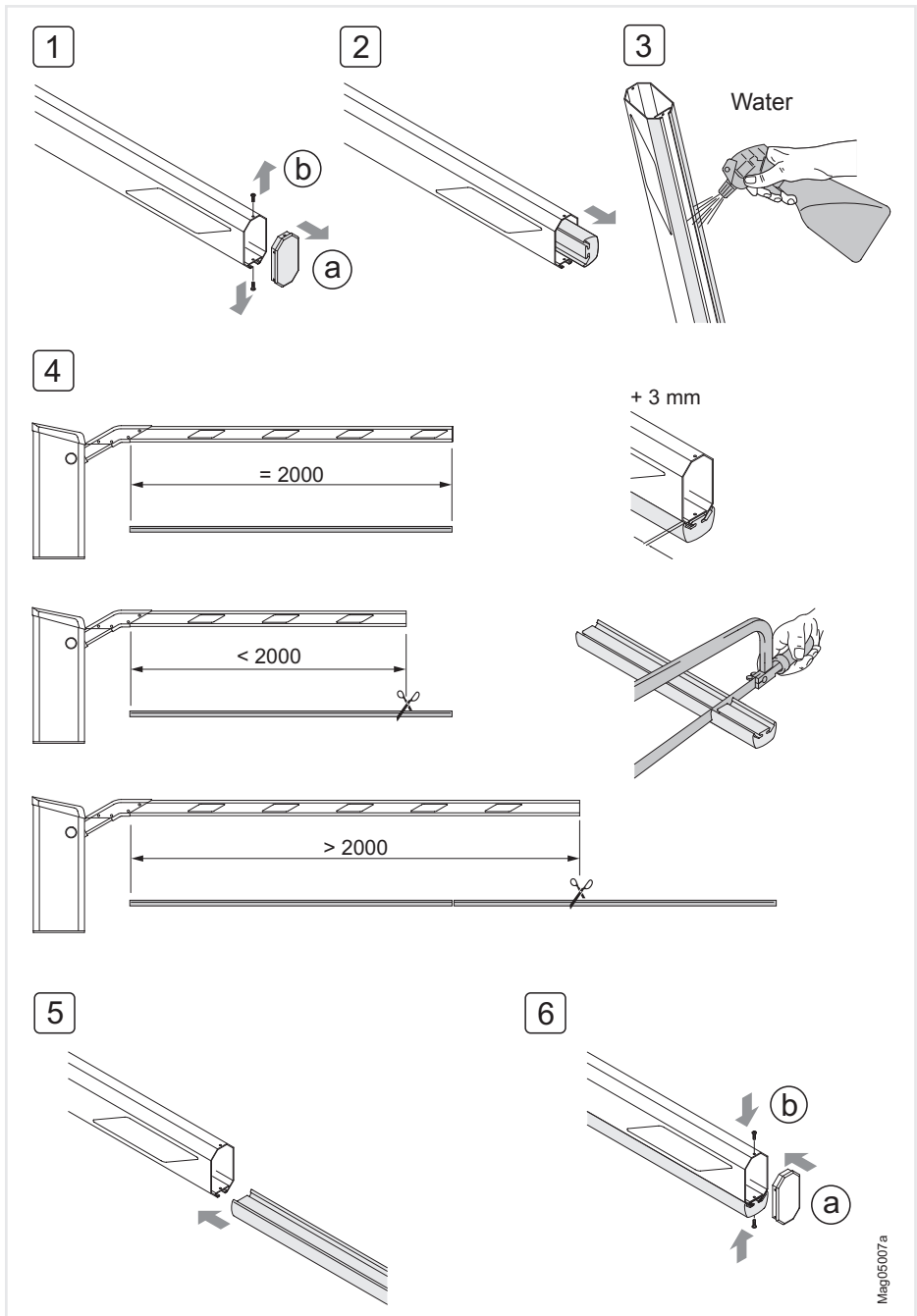
8.1 ACCESS PRO H

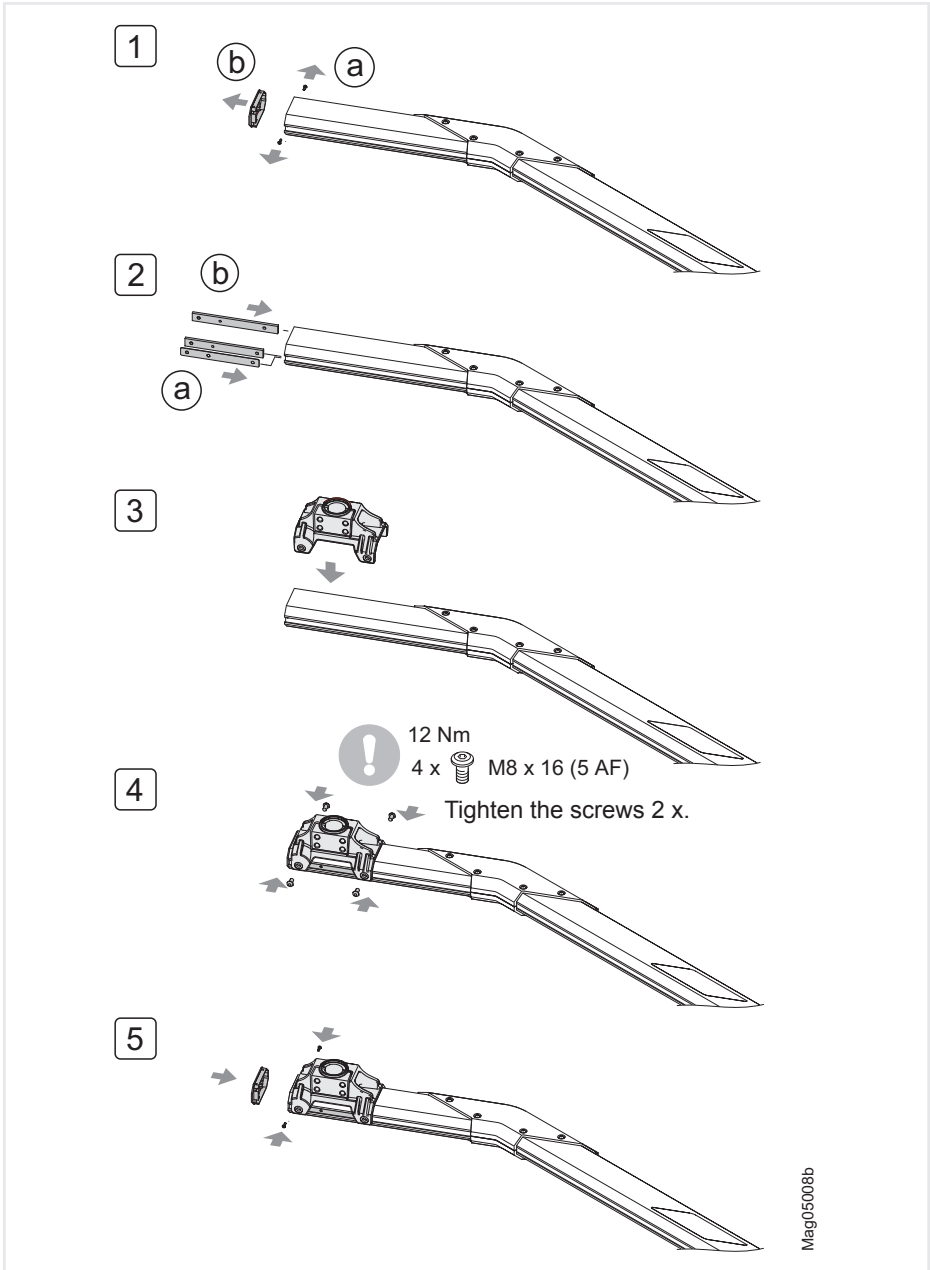


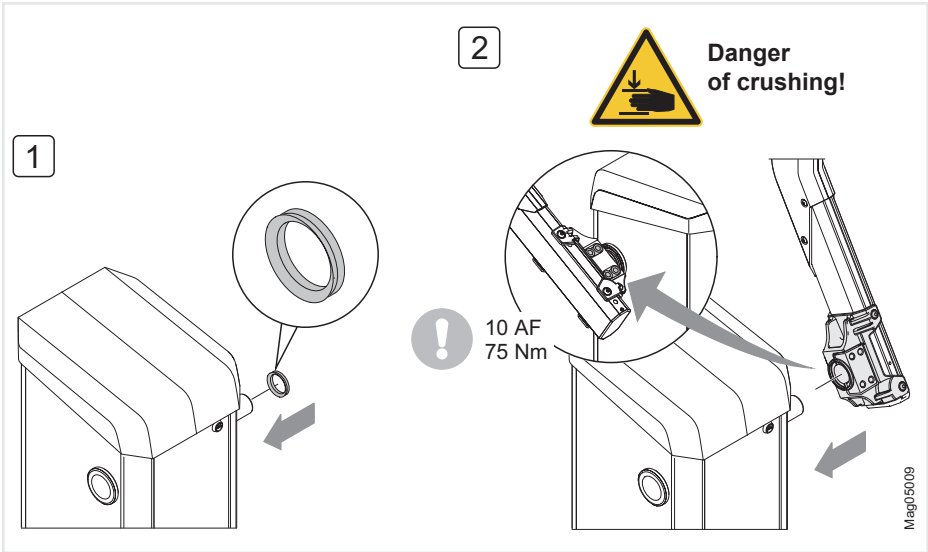


8.2 ACCESS / PARKING

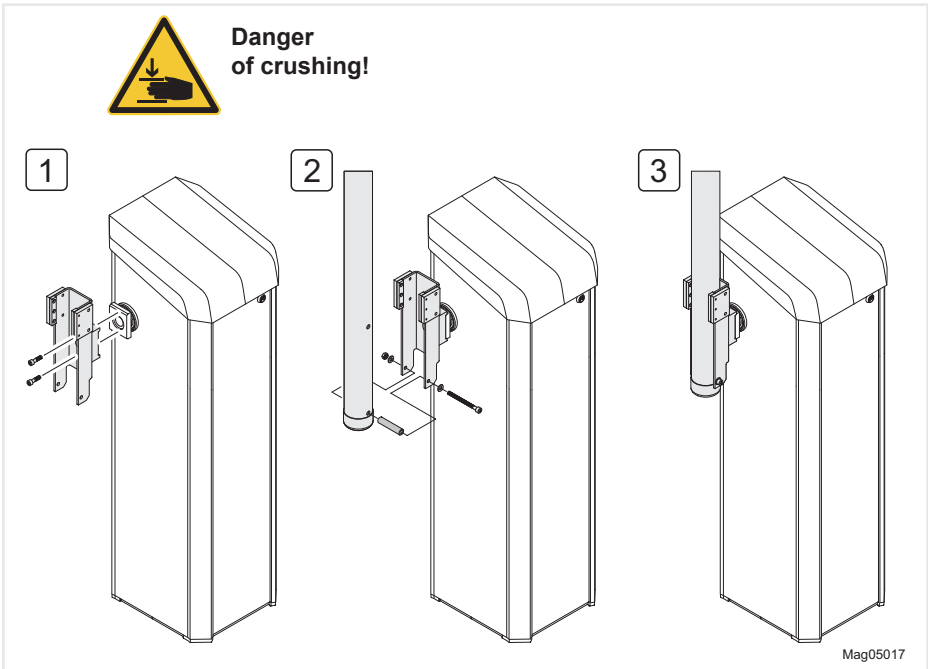




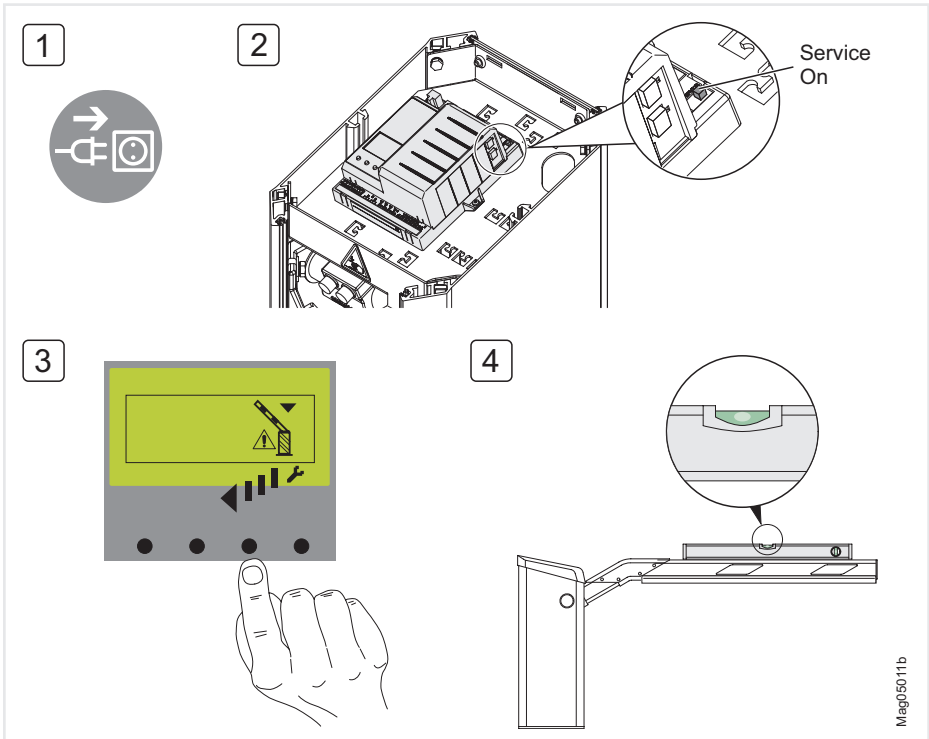
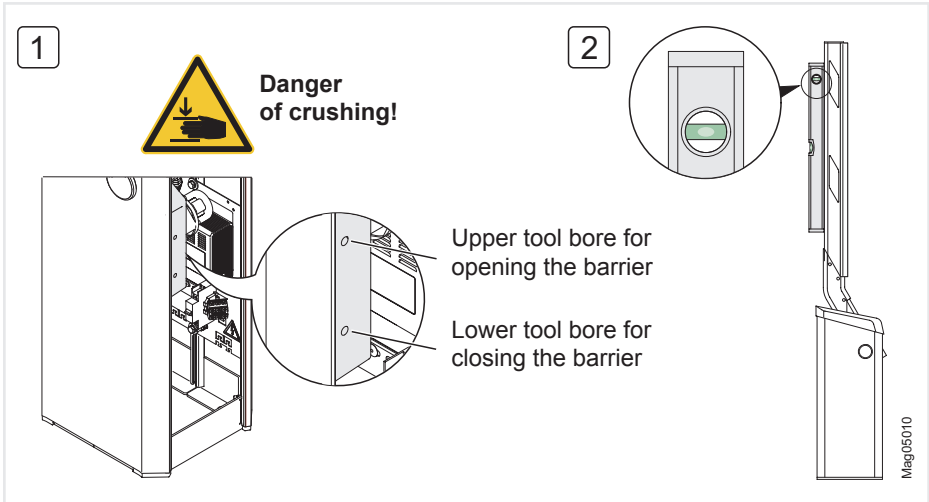




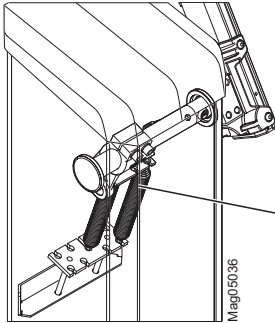
8.3 TOLL



9 Align barrier boom

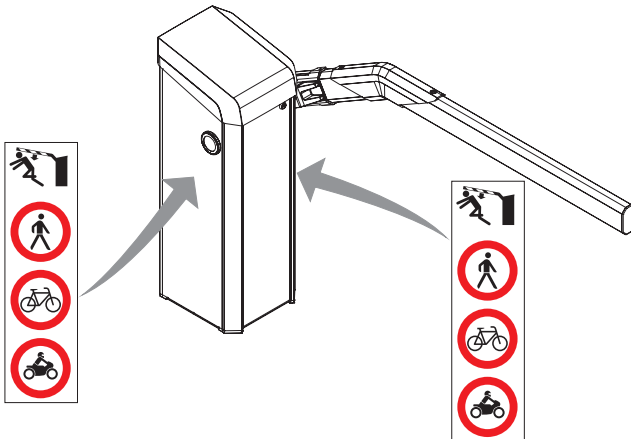


10 Adjust balancing springs

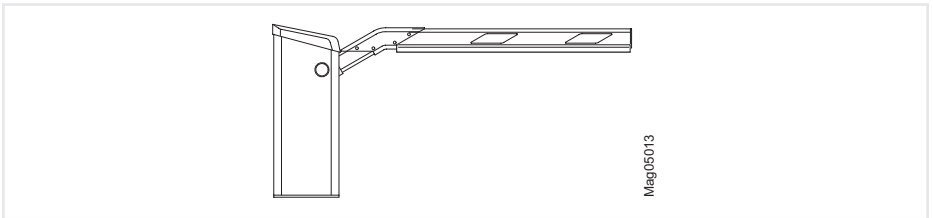
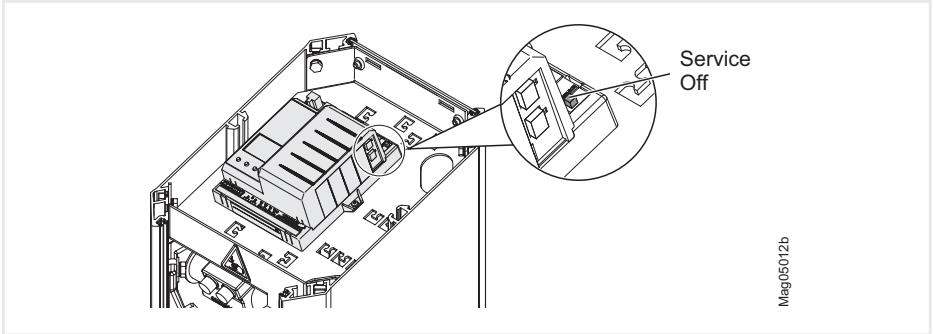


Check and set the balancing springs. See operating instructions, chapter "Check and set the balancing springs in the lever system".

11 Stick on warning signs



12 Start up barrier



MAGNETIC Autocontrol GmbH
Grienmatt 20
79650 Schopfheim
Germany
Tel.: +49 (0) 7622 695 5
Fax.: +49 (0) 7622 695 602
info@ac-magnetic.com
www.ac-magnetic.com