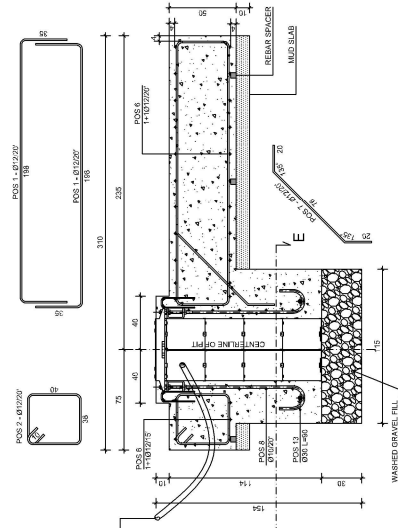
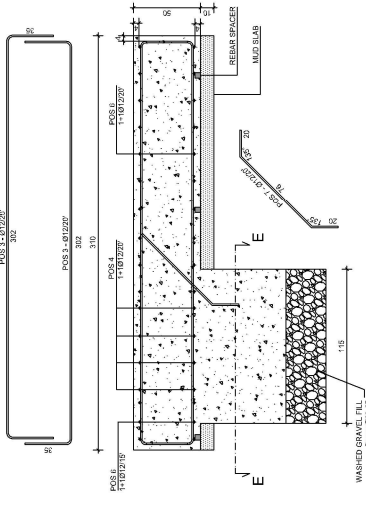


**J275 HA 2K20**  
EN

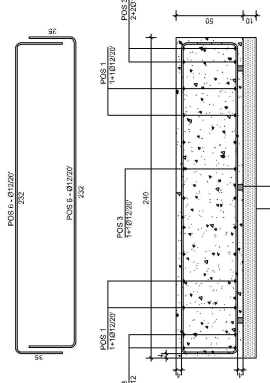
**SECTION A-A**



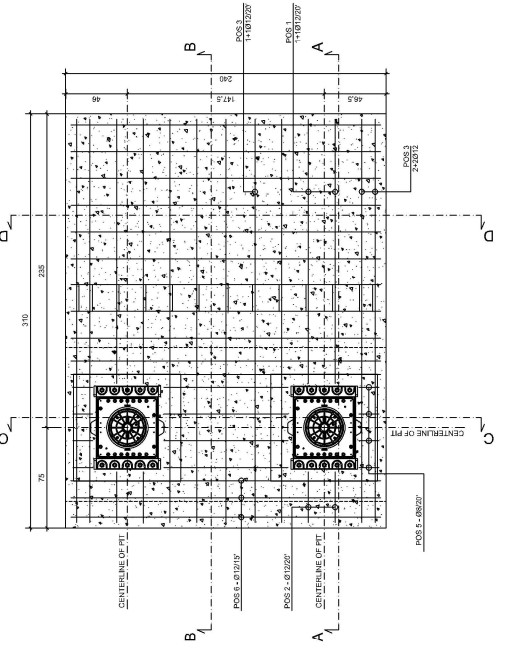
**SECTION B-B**



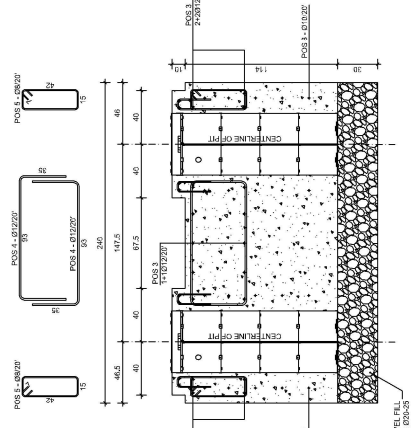
**SECTION D-D**



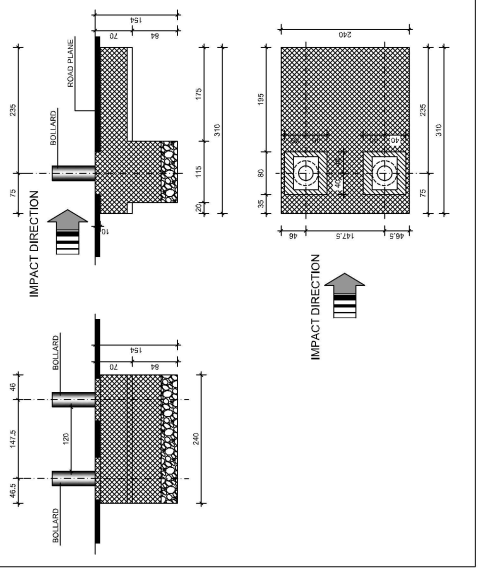
**PLANE VIEW**



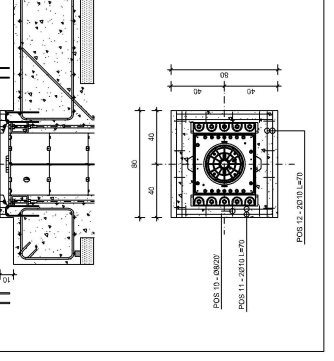
**SECTION C-C**



**MASTER PLAN**  
scale 1:10



**TOP COLLAR REBAR POSITION**



**BILL OF REBAR**

POS.	n°	φ	L (cm)	W (kg)	
1	8	12	268	19.03	
2	4	12	176	6.25	
3	18	12	372	59.45	
4	8	12	163	11.58	
5	8	8	128	4.04	
6	28	12	302	75.07	
7	13	12	116	13.39	
8	20	10	210	25.89	
9	20	20	135	66.56	
10	32	8	95	7.32	
11	8	10	70	3.45	
12	8	10	70	3.45	
13	4	30	90	19.99	
				<b>total weight of rebar:</b>	<b>285.52</b>

**VOLUME OF CONCRETE**

for mud slab		m <sup>3</sup>	0.46
for foundation		m <sup>3</sup>	5.27
<b>VOLUME OF DIGGING</b>		m <sup>3</sup>	7.50
<b>VOLUME OF GRAVEL</b>		m <sup>3</sup>	0.83
<b>WEIGHT OF THE PIT</b>		Kg	85.00

**MATERIALS + SPECIFICATION**

CONCRETE		Type of cement	Water content (max weight)	Consolidation (max time)	Min. Air Content (max %)	Max. Aggregate (max size)	Min. cover (max)
MODERATE EXPOSURE	C25/30	Portland 328/425	0.60	S4-F(R)210	XC2	20-25 mm	4.0 cm
SEVERE EXPOSURE	C32/40	Portland 328/425	0.50	S4-F(R)210	XC2+XD2	20-25 mm	4.0 cm
MUD SLAB CONCRETE	C12/15	Portland 325			X0	20-25 mm	

**MATURATION RULES (UNI EN 13670-102)**  
Formwork removal time 48 hours  
Max resistance 28 days

**REBAR**  
IRON B500C - B450C or N20  
Min. distance between bars = 35 mm

CONCRETE COVERS MUST BE GUARANTEED BY SUITABLE MESH SPACERS

ALL DIMENSIONS MUST BE CHECKED ON SITE BEFORE TO BEGINNING WORK

**FAAC**  
Via Caleri 10, Zola Predosa, Bologna, Italy  
Tel: 051-672411 Fax: 051-758518

Description **J275 HA 2K20 PIT FOUNDATION**

Code **532379**

Revision **A**

FAAC Private property. The drawing reproduction and show to third persons without the prior permission of FAAC is forbidden. FAAC protects his rights in accordance with the law.