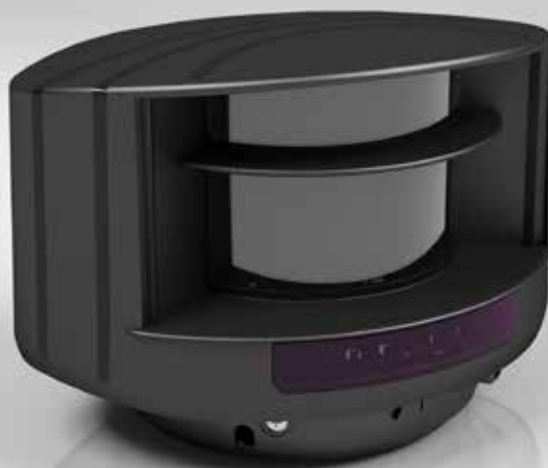


Horizontal Laser Scanner

for vehicle barriers

mAGNETIC[®]
ACCESS TO PROGRESS



For reliable detection of vehicles and persons

The MLSHOR01 Horizontal Laser Scanner expands the scope of applications for your Magnetic barriers. It can be used wherever barriers with high impact forces are intended to provide rapid processing but not bar pedestrian passage. The laser scanner reliably detects vehicles and persons, ensuring maximum personal protection. Another area of use is in structural situations where no induction loops can be installed or when optimum operation is prevented by, for example, electrical ramp heating.

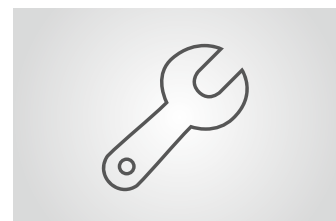
The laser scanner inspects a field area of max. 9.9 x 9.9 m. The scanning area can be divided up into one safety field and one opening field. Vehicles and persons are detected within the safety field; only very small objects (such as pendulum supports) are cut out. Depending on the selected settings, the barrier only opens when a vehicle is detected, not persons. The barriers then only close when nobody is present within the safety field. The laser scanner generates four overlying beams, effectively suppressing any interference.

Technical data	MLSHOR01
Detection area	Max. 9.9 x 9.9 m
Power supply	10–35 V DC/max. 5 W
Laser classes	IR laser: Class 1, wavelength 905 nm, max. pulse power 75 W Red-light laser: Class 3R, wavelength 650 nm, max. transmission power 3 mW
Material	Polycarbonate (PC), acrylonitrile (ASA)
Enclosure rating	IP 65
Temperature range	–30 °C to +60 °C
Air humidity	0 to 95%, non-condensing



Accelerated access

Use of the MLSHOR01 laser scanner also permits rapid barriers with high impact forces to be employed where pedestrian passage cannot be ruled out. This substantially accelerates operation.



Simple commissioning

The Horizontal Laser Scanner enables rapid and reliable commissioning, even in situations in which induction loops cannot be installed or would not operate reliably due to interference in the surroundings.

Horizontal Laser Scanner

for vehicle barriers

- > Effective protection for persons and vehicles
- > Enables use of barriers with high impact forces in combination with pedestrian traffic
- > Reliable replacement of induction loops for opening and safety
- > Adjustable safety and opening fields
- > Adjustable values for the objects to be detected in the opening field
- > TÜV-certified as personal protective equipment



Options	Description	Illustration
MLGHOR01	Bracket with cover for mounting on left or right of barrier housing	
MLPEIN01	Stepped posts for installation of the laser scanner for a large safety field on left and right of barrier boom	
MLPREF01	Reference posts for laser scanner The reference posts are required when no wall or other background can be used as a reference.	
MLVE24	Power supply unit for laser scanner	

We would be pleased to send you dimensional drawings on request.