

Rising Arm Barriers



DAAB barriers are manufactured in Sweden, and specially designed to withstand the very harsh Scandinavian climate. For example the pedestal housing is made from stainless steel, and the drive is a development of our reliable MK Swing gate drive. All components are corrosion resistant to ensure trouble free, long term service.



Trelleborgs harbour



Restaurant Djurgården



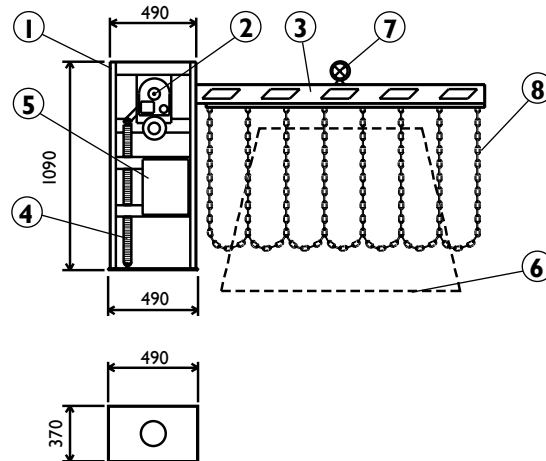
Klippans papermill

DAAB drive systems are designed, developed and manufactured 'in house'.

DAAB manufactures barriers and drive units for gates and doors all over Europe.

Our Product Range gives you freedom of choice.

In our 'Suggested Control Function'* sections you will find various proposals. We have tried to cover a range of eventualities so that nothing is hidden or forgotten, however the final choice is yours, and we will accommodate your specific requirements. Individual designs are the rule rather than the exception at DAAB.



DAAB Equipment:

- ① **Pedestal Housing** made from polished stainless steel with lockable front access door.
- ② **Oil filled worm gear drive system** complete with proximity switches, clutch and 3-phase motor.
- ③ **Boom** manufactured from tubular aluminium, finished white with reflective red chevrons.
- ④ **Counterbalance spring**, depending on boom length.
- ⑤ **Control Panel****. A complete operating system with 'Loadguard', automatic closing etc. with optional thermostatically controlled anti condensation heating. Prepared to accept radio control, card readers etc.

Optional extras:

- ⑥ **Inductive ground loops**. To prevent the barrier from closing while a vehicle is present. Recommended when auto close functions are utilised.
- ⑦ **Boom mounted dual** aspect orange warning light.
- ⑧ **Pendular skirt** under boom for increased security.

* See separate Data sheets.

** This control panel has been specially developed by DAAB to control gates, doors and barriers. It is prepared to accept all types of access systems including radio transmitters, card readers, key pads etc. Additional circuit boards for the control of the traffic lights and electro magnetic locks are easily added.



Pedestal housing in stainless steel.



The clutch release mechanism and control panel are easily accessible through the lockable door.

Optional Control Equipment for Barriers



Push Buttons Open/Stop/Close, for remote control e.g. from Reception or Guard House.



Key Switch Override for local control of the barrier.



Radio Single or multi function hand held remote transmitters, vehicle mounted transmitters, and their corresponding receivers.



Key Pad/Card Reader Individual or combined units for cards and/or digital codes. Batch code or voidable cards are available.



Manual Override Switch Available functions are:
1. Hold barrier open during normal working hours.
2. Disable 'free exit' inductive ground loop for set periods.
3. Hold barrier closed.



Induction Loops To open the barrier automatically when a vehicle presence is detected.



Programmable Clock 7 days or 365 day programmable timer, functions may include:
1. Hold barrier open during normal working hours.
2. Disable 'free exit' inductive ground loop for set periods.
3. Hold barrier closed.



GSM module Open with a phonecall. We can offer different modules with less or higher intelligence.



Cashier-code system A flexible access system suitable for Hotels, Camping sites, etc.

